

# HIKOKI

**UNLEASH the NEXT**

Cordless Cleaner

36V R 36DB



**Easier to Use & More Efficient  
with a New Floor Nozzle**

**NEW**



**MV**  
MULTI VOLT  
BRUSHLESS



# New Floor Nozzle

## ① Smooth Movement

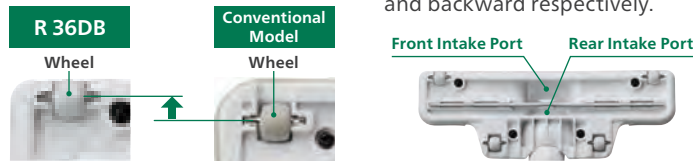
The optimal design of the floor nozzle with a moving blade offers smooth operation even on carpets and rugs.

## ② Easy to Go Over Carpets and Rugs

The floor nozzle with optimally positioned wheels avoids snagging on the edges of carpets and rugs.

## ③ Improved Cleaning Efficiency

The new nozzle has front and rear intake ports and they suck in the dirt when moving forward and backward respectively.



# Extremely Powerful

Powerful Suction. Low Noise\*1 at 72dB\*2.

Approx. **2x** More\*1 Durability  
**73,000RPM** Brushless Motor



Extremely Powerful  
**155W** Suction Power  
Approx. **3.9x** More

Suction Work Rate\*3 in High Mode  
**36V R 36DB** New Model **155w**  
**18V R 18DB** Current Model **40w**

Runtime per Charge\*3 with BSL36A18 Battery

High	Approx. 15min
Mid	Approx. 30min
Low	Approx. 60min

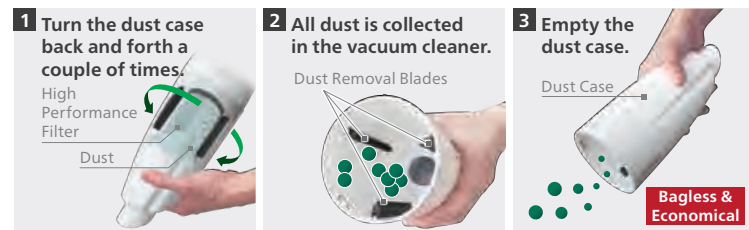
## Highly Efficient (High Performance Filter)

A **high-performance fabric filter** offers a filtration efficiency 36% greater than a conventional model\*1\*4, thus capturing more fine dust.

Approx. **36%** More\*1 Conventional Model

## Easy and Quick Dust Disposal

The dust case is designed for easy dust removal and eliminates the need for disposable bags.



## Cordless Cleaner

36V R36DB

**MV** MULTI VOLT  
**BRUSHLESS**



Filter Cleaning Indicator

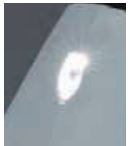


Switch Panel

The suction power can be switched between 3 modes: 3 HIGH, 2 MID and 1 LOW.

LED Light

For better vision while vacuuming.



## Specifications

Model	R36DB	
Battery Voltage	36V	
Dust Case Capacity	560mL	
Suction Work Rate	High	155W
	Mid	65W
	Low	35W
Noise Level*2	72dB	
Continuous Operating Time*3	High	Approx. 15min
	Mid	Approx. 30min
	Low	Approx. 60min
Overall Length	476mm	
Weight*5	1,008mm (with Extension Pipe and Floor Nozzle)	
	1.6kg (with BSL36A18) 1.9kg (with BSL36B18)*6	
Standard Accessories*7	Battery (BSL36A18), Charger (UC18YSL3), Flooring Nozzle A, Crevice Nozzle, Extension Pipe (with Nozzle Holder), Battery Cover	

## Optional Accessory

<b>High Performance Filter</b> Code No.376509	<b>Rack Brush*8</b> Code No.375371	<b>Round Brush*8</b> Code No.375372
<b>Flexible Hose*8</b> Code No.375373	<b>Angle Joint*8*9</b> Code No.375374	<b>Extension Pipe (Short)*8</b> Code No.375375

\*1. Vs. HiKOKI R18DA cordless cleaner.

\*2. The noise level is shown for reference purposes and varies according to the measurement system used.

\*3. The values shown are for reference purposes and may vary according to the state of the battery and other conditions.

\*4. The filtration efficiency was tested with 20g talc powder. Using the filter does not guarantee complete removal of dust particles and viruses.

\*5. Weight: according to EPTA-Procedure 01/2014.

\*6. Sold separately.

\*7. Standard accessories vary by country or area.

\*8. The color may differ from the vacuum cleaner.

\*9. Use it with an extension pipe or another accessory.

Distributed by:

